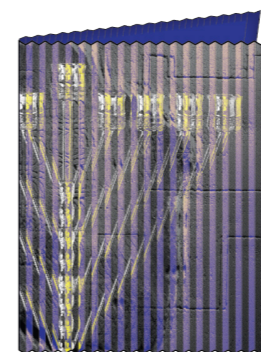
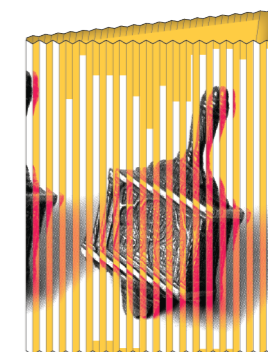


# Pleated Chanukah Cards Project

(A step-by-step instruction guide)

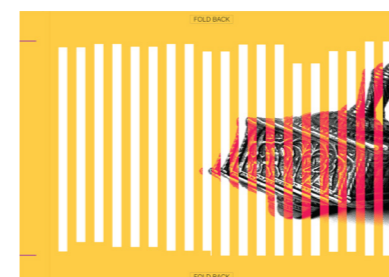


MENORAH CARD



DREIDEL CARD

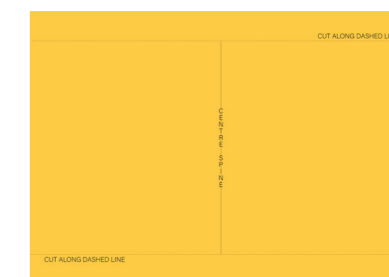
## PIECES:



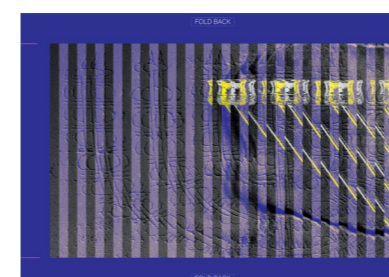
1



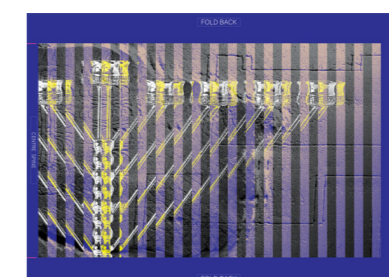
2



3



4




5



6

- 1 Dreidel Card Shell (Back)
- 2 Dreidel Card Shell (Front)
- 3 Dreidel Card Lining
- 4 Menorah Card Shell (Back)
- 5 Menorah Card Shell (Front)
- 6 Menorah Card Lining

## STEP 1: Fold the top and bottom tabs.

-Start by folding the top and bottom tabs **UNDERNEATH THE FRONT**, so the **FOLD BACK** texts are visible when you turn the paper backside up. Use the  marks to help you.

## STEP 2: Pleat the card front

-Fold the tab labelled '*Centre Spine*' **UNDERNEATH THE FRONT**, along the line where the image begins, so that the **CENTRE SPINE** text is visible when you turn the paper backside up.

-Begin folding **along the lines where the colour strips meet the black and white strips**, folding up and down as if making a paper fan. Use the guide marks on the blank side of the artwork to help make the folds on the back. It is important that the folds hit these lines.

-When you make your last fold between the final black and white strip and the empty strip, the empty strip should be folded down to face the back (just like the **CENTRE SPINE** tab.)

## STEP 3: Pleat the card back

-Repeat Steps 1 and 2 for pleating the card back, so you end up with two separate pleated pieces.

## STEP 4: Glue the centre spines together

-Carefully glue both **CENTRE SPINE** tabs together with Pritt glue or white craft glue. The outer shell of the card is now finished.

**STEP 5: Fold over, or cut off the top and bottom tabs on the lining piece along the dashed line. Fold the piece in half inwards along the centre spine.**

**STEP 6: Write your holiday message to your friends and family (on the lining piece!)**

-Leave a little bit of space on the right and left edges of the card, about two fingers' width.

**STEP 7: Glue the outer shells to the card lining to finish your card!**

-Place the lining piece in front of the pleated outer shell so that the centre spines line up. Tuck the folded blank edges of the pleated outer piece over the clean edges of the lining piece. Carefully glue the folded outer edges to the lining. Repeat process for Menorah card.

